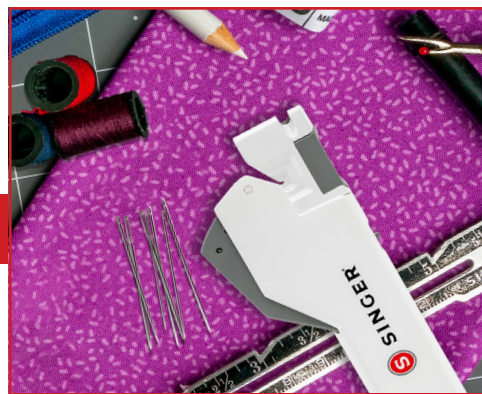




SINGER®

NEEDLE THREADER ASSISTANT

Quick and easy way to thread a needle



Takes the work and frustration out of threading hand needles with its simple one-push action button.

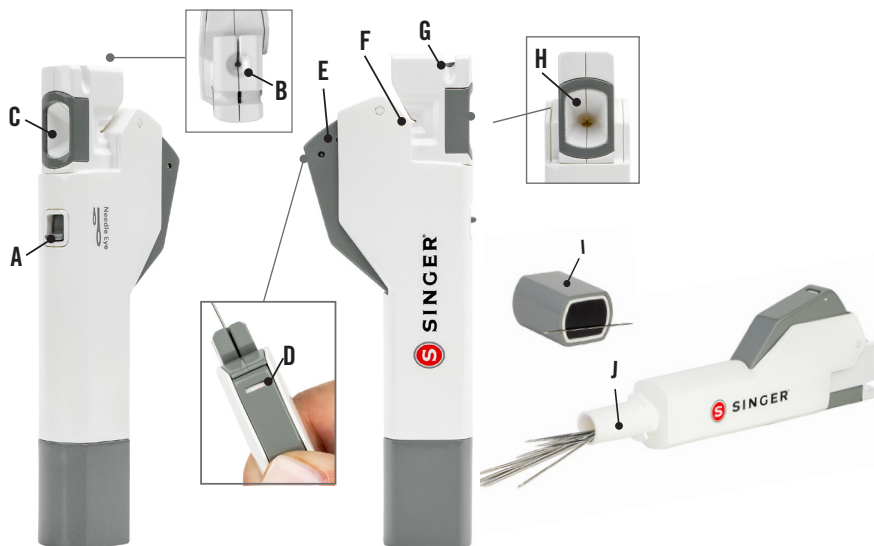


Diagram Parts List:

- | | |
|-------------------------|-------------------------|
| A - Eye Size Selector | F - V groove |
| B - Guide Hole | G - Thread Cutter |
| C - Window | H - Thread Guide Pin |
| D - Alignment Indicator | I - Magnetic Pickup |
| E - Lever | J - Storage Compartment |



Step 1

Position eye size selector (A) to small or large

Step 2

Insert needle into guide hole (B) with eye facing window (C) so it touches end.



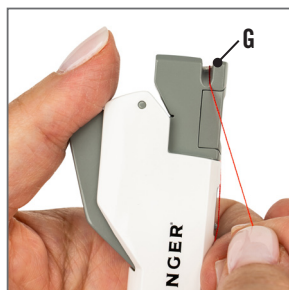
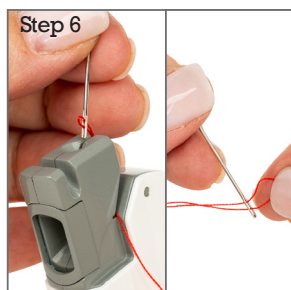
Step 3

Gently push down on lever (E), if alignment indicator (D) shows red or feel resistance STOP. This means needle eye is not properly aligned to allow thread guide pin (H) to pass through, repeat step one/two and test again.

Tip: With lever pressed in, thread guide pin should pass through window if alignment is correct.

Step 4 & 5

Release the lever and place a length of thread into the V groove. Gently push the lever again to guide the thread through the needle.



Step 6

Release the lever and withdraw threaded needle. Gently pull the thread loop to complete process.

Tip: Use built-in thread cutter (G) for trimming excess thread

Warnings: Take care not to prick finger as needle point is up when set in threader. Ensure that needles are not left in threader when not in use. This is a sharp product, keep away from children.

SINGER and the "S" Cameo Design are exclusive trademarks of The SINGER Company Limited S.à.r.l. or its Affiliates. ©2020 The SINGER Company Limited S.à.r.l. or its Affiliates. All rights reserved. Product distributed under license by Dyno Merchandise, Pompano Beach, FL 33064.